

# 供应链模块

## 通过数据分析来优化供应链运营

Minitab® 供应链模块为组织提供专门构建的数据分析, 以帮助组织衡量、了解和改进其供应链。使用常用术语进行引导式问题解决, 从而节省时间并简化发现最常用的供应链关键绩效指标 (KPI) 的过程。

## 熟悉的 KPI 和术语

借助 Minitab® 供应链模块, 可以轻松找到所需的数据见解。针对 KPI (如周期时间、库存、交付、质量、盈利能力和成本) 预先构建了分析, 无需像以前那样花时间解释要使用哪种数据分析来获得所需的结果。

用众人熟知的供应链语言编写引导式问题解决方案, 这意味着您无需成为统计学家即可了解您的数据。

**Supply Chain KPIs**  
Supply chain KPIs provide data-driven insights into how well your organization performs.

- Cycle Time**  
Analyze supply chain cycle times to identify existing or potential problems and make improvements.  
Cash-to-cash cycle time  
Customer order cycle time  
Day sales outstanding  
Supply chain cycle time
- Inventory**  
Analyze inventory to meet customer demand without spoilage or damage caused by poor inventory management.  
Stock rotation  
Day sales of inventory  
Months on hand  
Inventory days of supply
- Delivery**  
Analyze defects in delivery times to meet customer expectations and decrease inventory costs.  
On-time delivery  
On-time shipping rate  
Supplier on-time delivery  
In-full delivery
- Quality**  
Analyze problems in delivery quality to improve customer satisfaction.  
Damage-free delivery  
Back-order rate  
Freight bill accuracy  
Perfect order delivery rate
- Profitability**  
Optimize the supply chain to maximize profitability.  
Gross margin return on investment  
Turn-earn index
- Costs**  
Reduce supply chain costs to increase profitability without increasing sales.  
Inventory carrying cost  
Freight cost per unit  
Supply chain cost per unit  
Cost as a proportion of sales

Cancel

**Supply Chain Cycle Time**  
Supply chain cycle time is the length of time to complete an order if inventory levels are zero. Supply chain cycle time includes the amount of time to order, fulfill, and receive the order. To analyze supply chain cycle time, each row in the worksheet should contain the supply chain cycle time for a single product.

- Visualize supply chain cycle time**  
Visualize the average, range, and distribution curve of supply chain cycle time.
- Visualize relationships with supply chain cycle time**  
Visualize relationships between supply chain cycle time and other variables, such as warehouse, to see when supply chain cycle time increases or decreases.
- Predict supply chain cycle time**  
Determine the key drivers of supply chain cycle time and predict future supply chain cycle times.
- Decrease supply chain cycle time**  
Demonstrate that a process is capable of meeting expectations for supply chain cycle time or demonstrate that average supply chain cycle time decreases after a process improvement.

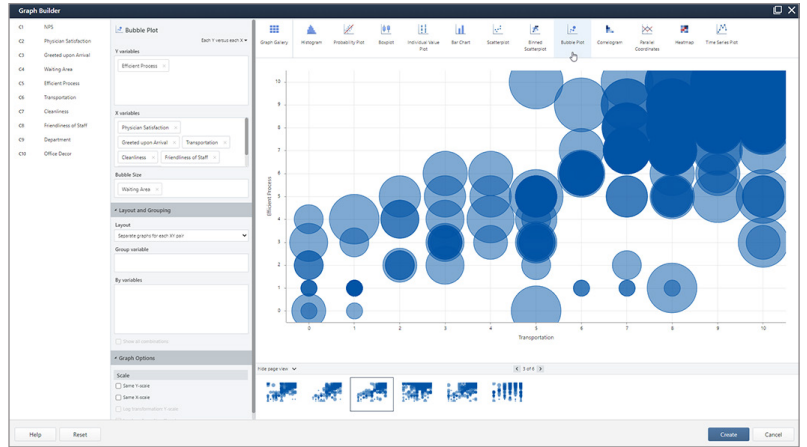
Back OK Cancel

## 专家指导

以常用且易于理解的术语提供了引导数据分析, 并配有特定的供应链示例, 同时我们行业领先的技术支持团队也将通过电话或电子邮件为您提供帮助。

# Minitab® 的强大功能

Minitab® 值得信赖的统计工具可帮助世界各地的组织充分利用其数据。找出趋势, 识别和预测模式, 发现变量之间的隐含关系, 并创建精确的可视化效果, 从而应对桌面或云中严峻的挑战和机遇。



# Minitab


加速您的数字转型

立即与 Minitab 沟通  
[minitab.com](https://www.minitab.com)

自动化和报告

数据分析和预测建模

模型部署和监控

 Minitab Connect®

集成和转换数据以进行分析、报告和监控

 Minitab®

每个人都可以使用的强大统计软件

 SPM®

机器学习和预测分析软件

 Minitab Model Ops®


在简单但功能强大的平台上进行模型生命周期管理

可视化业务工具


项目构思与执行

自定进度的学习

质量解决方案

 Minitab Workspace®

可确保过程与产品卓越性的可视化工具

 Minitab Engage®

启动、跟踪、管理和执行创新及改进计划

Education Hub  
Powered by Minitab

随时随地参加在线培训学习, 掌握统计知识和 Minitab

Real-Time SPC  
Powered by Minitab

监控、应对及交付即时质量和过程监控

Minitab® 和 Minitab® 徽标是 Minitab, LLC 在美国及其他国家/地区的注册商标。有关更多信息, 请参阅 [minitab.com/legal/trademarks](https://www.minitab.com/legal/trademarks)。

©2023, Minitab, LLC. 保留所有权利。